

Château Koch de Gooreynd

*Gooreind. — Château de Gooreind.
Une Entrée.*



1935

315 Ha

Military
Airport

Road to Essen

Road to Breda

Military
Property



2024



Entrance gate château



Main entrance

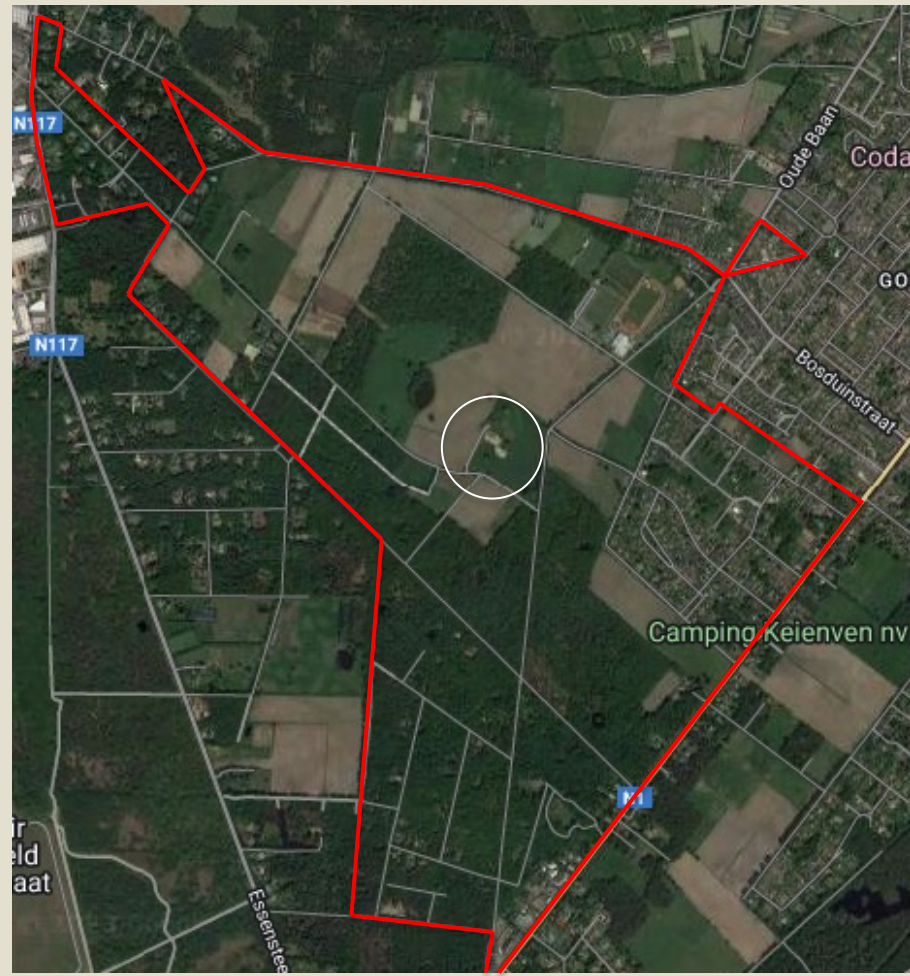


Tomb fam. Koch

1935



2023









Gooreind — Château du Gooreind — Les écuries.



4027 Gooreind. — Château du Gooreind. — L'Etang.





1944



1944

4027 Gooreind. — Château du Gooreind. — L'Etang.



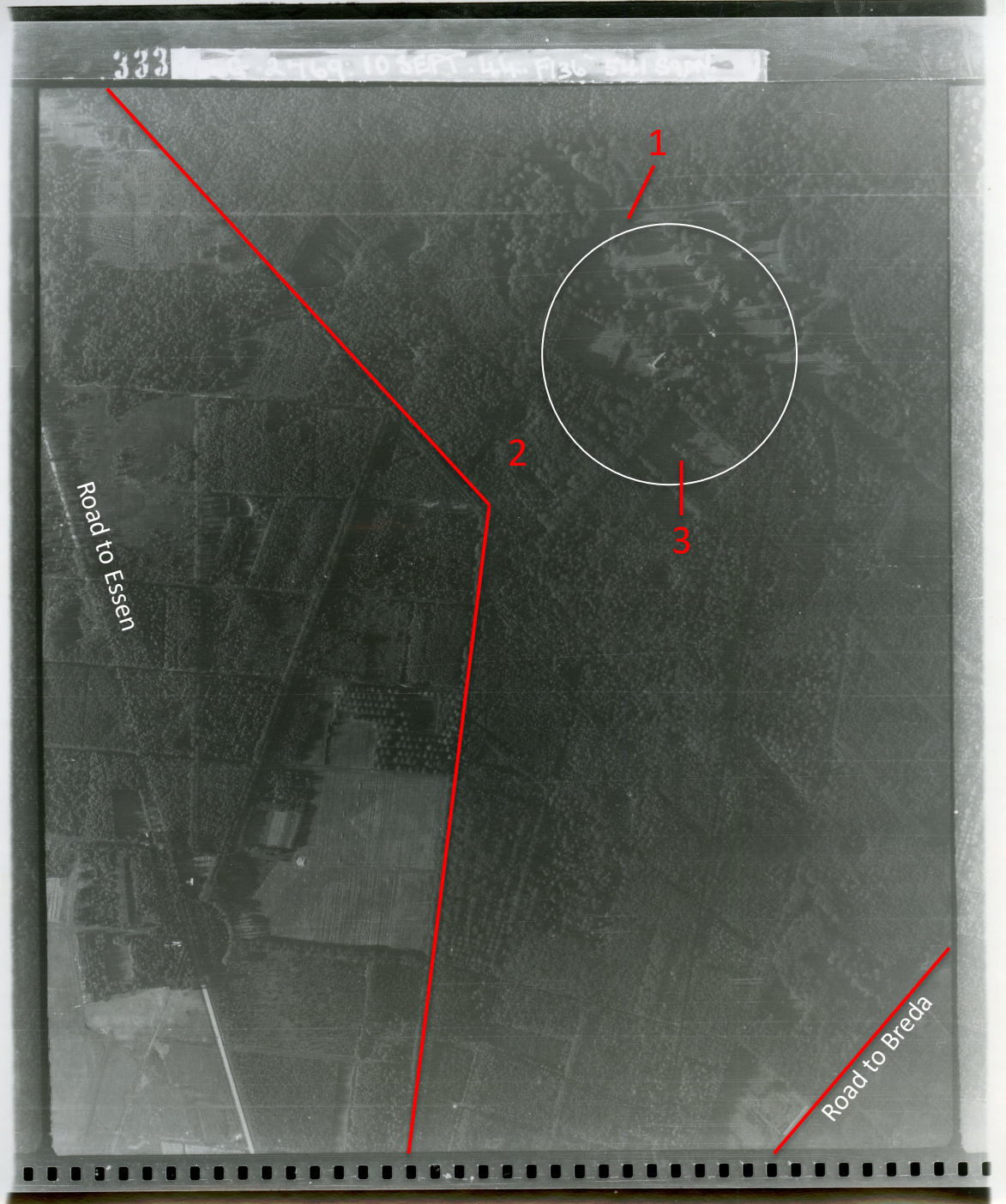
Park pond



Oak lanes



Rose garden & conservatories



333

Road to Essen

Road to Breda

1

2

3

1944



Main entrance

713 Kasteel Koeh de Gooreind. Hoofdingang



Ox stables



South entrance



Geopunt kaart met Lidar munitieputten?